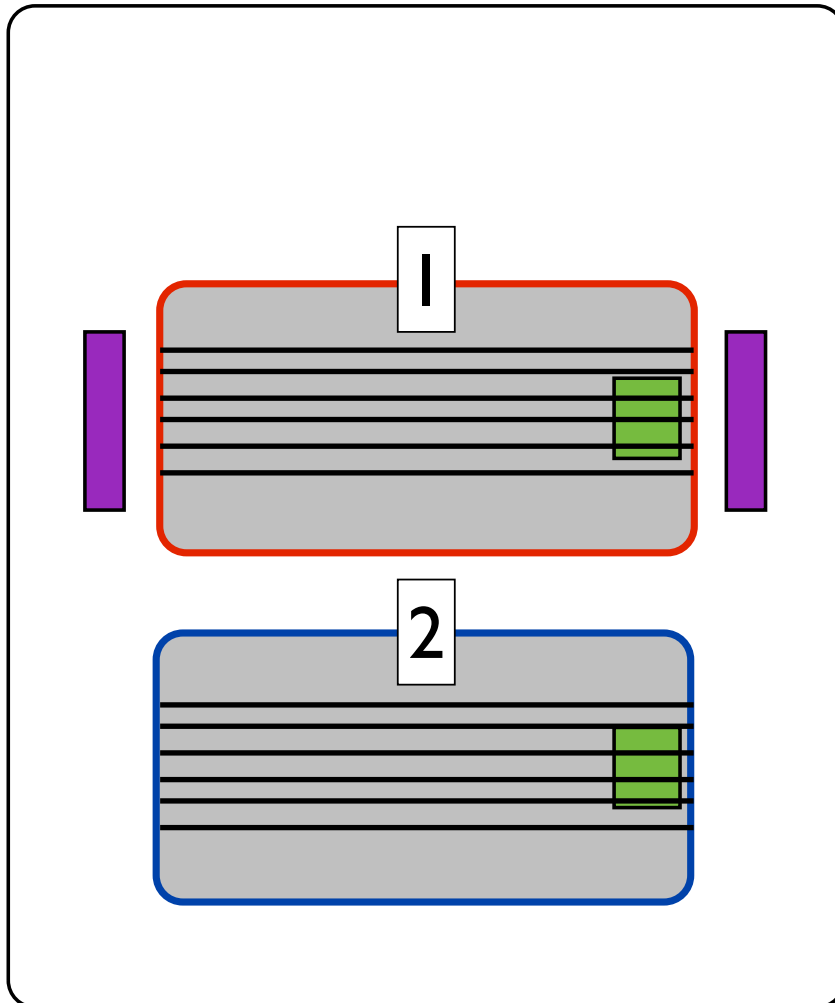


Summary of August 2009 SCK-CEN trip

Schematic of setup: side view



- 1: - **Draka** fibre
- closer to coolers
 - used to control temp
 - more temp variation

- 2: - **Infinicor** SX+ fibre
- farther from coolers
 - didn't get as cold
 - more stable temp

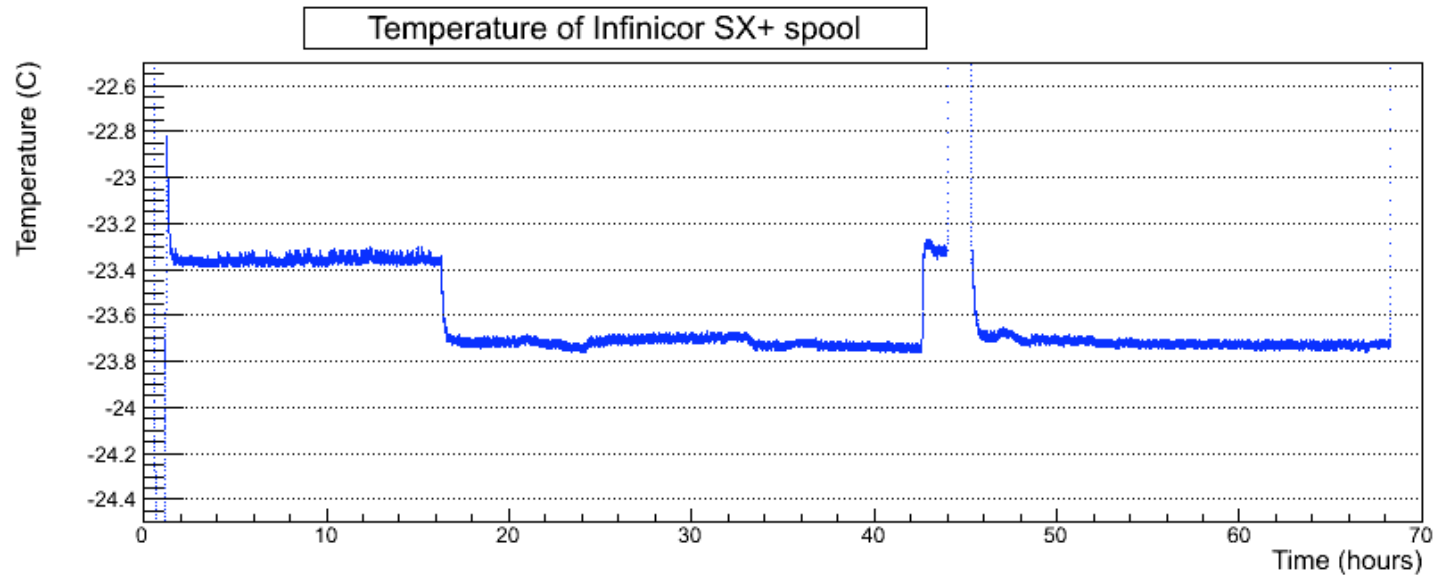
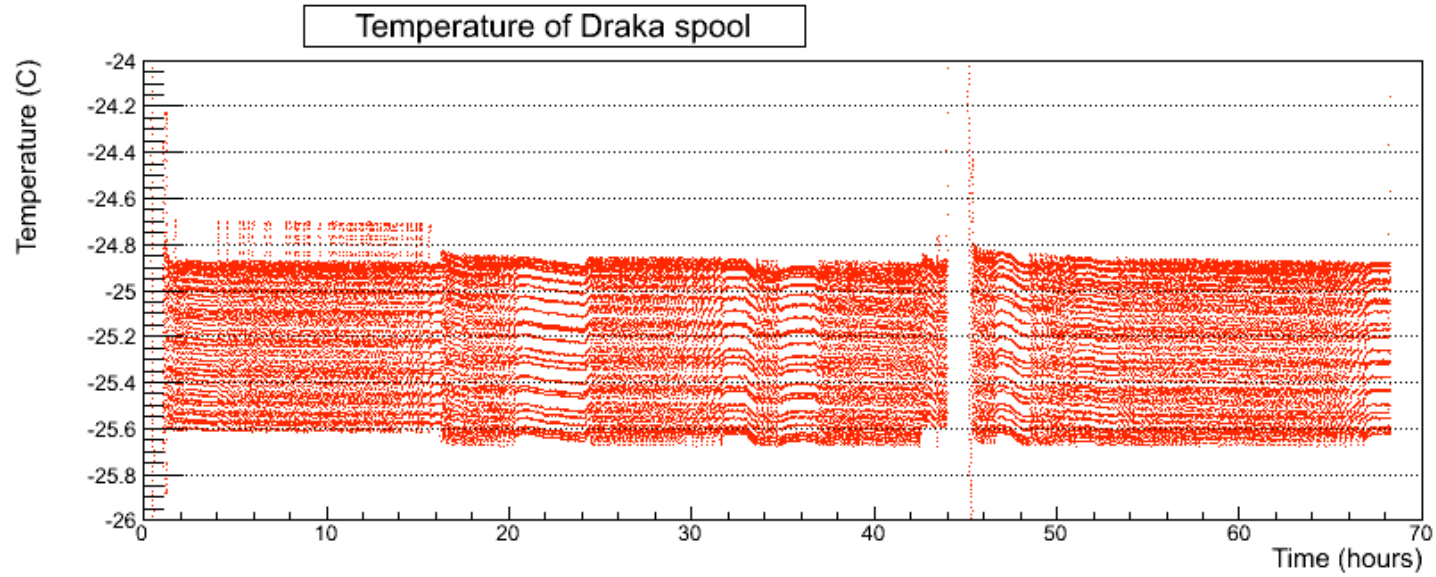


PT 100 Resistor/ Thermometer

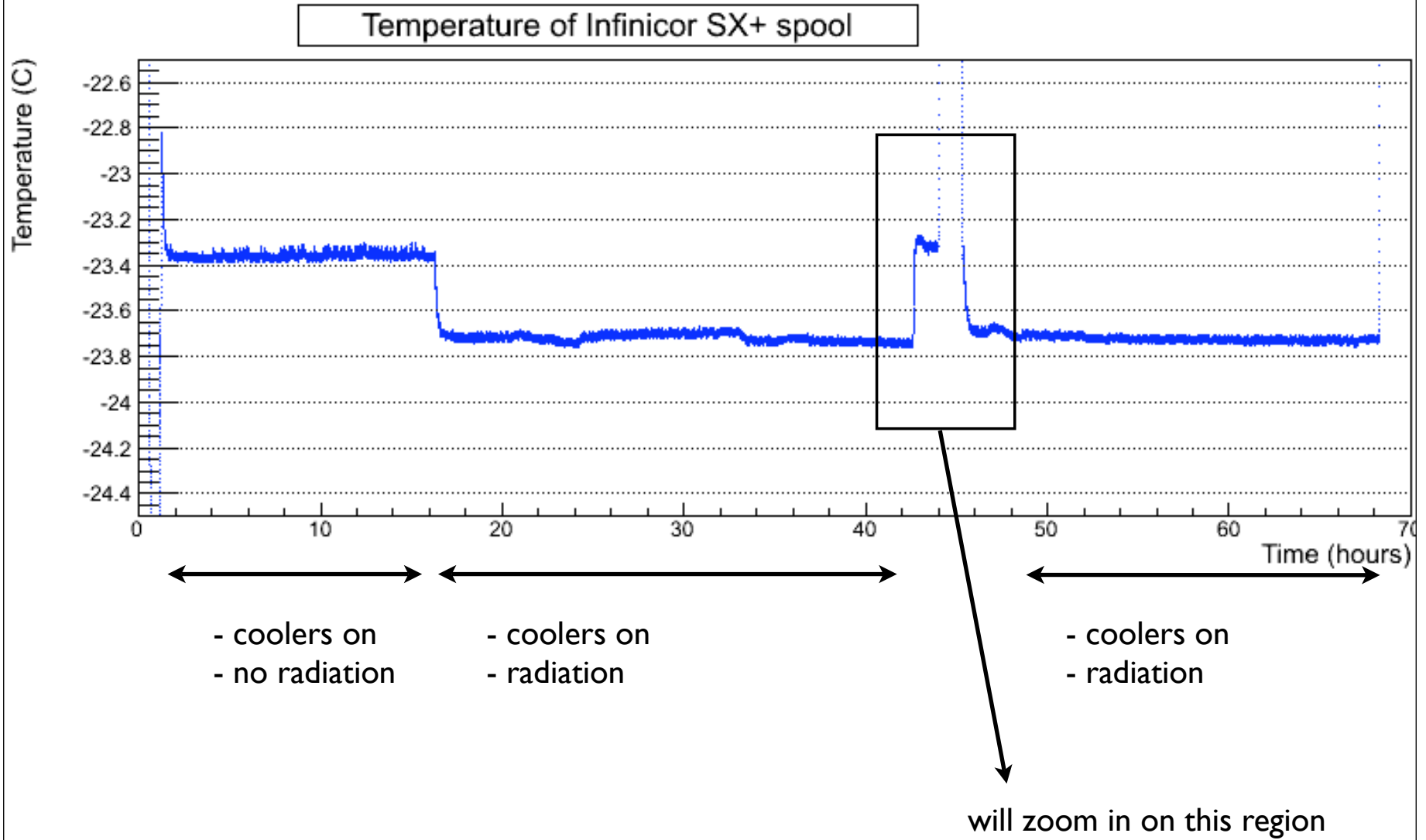


Double-layered Peltier cooler

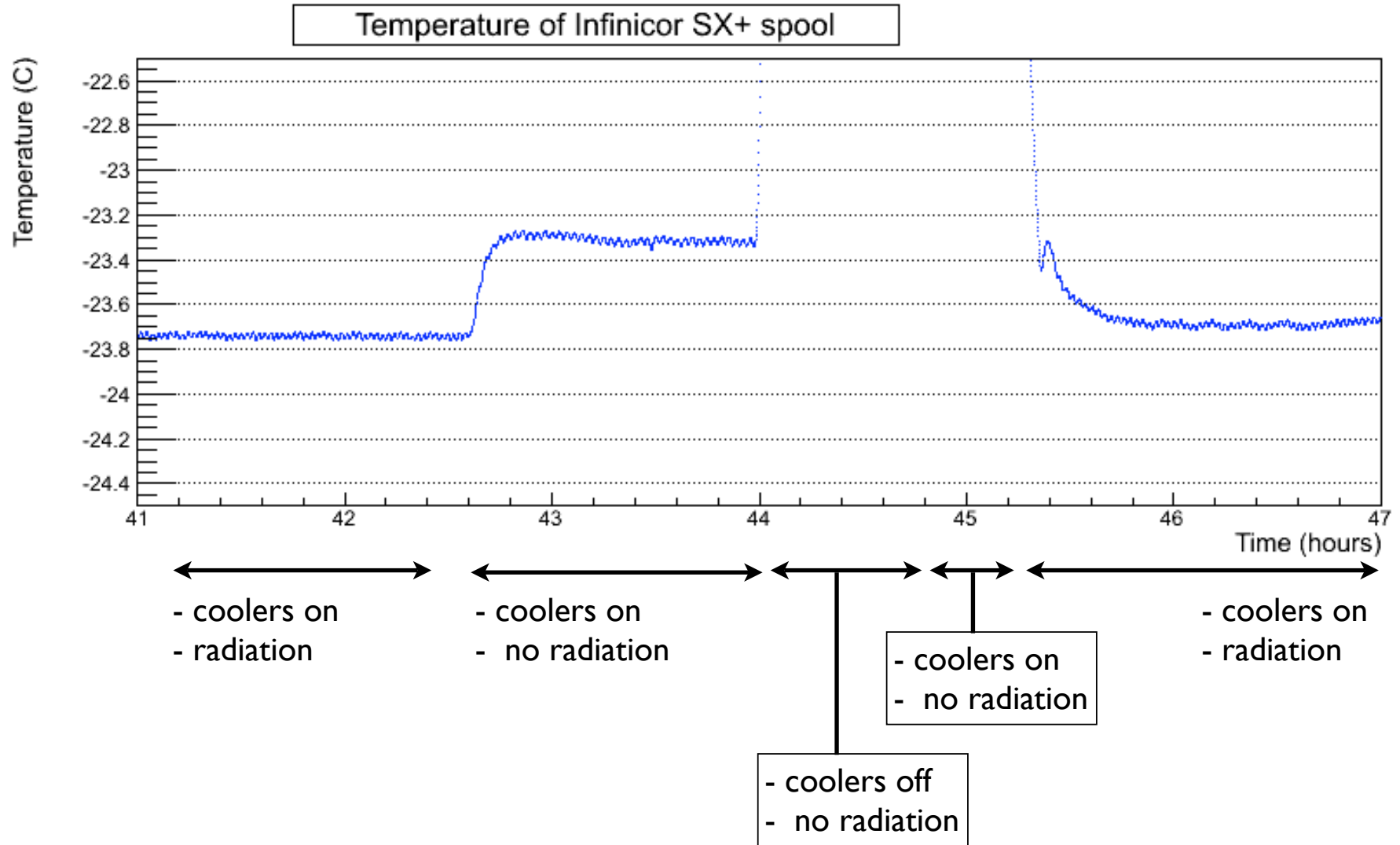
Temperature of each spool



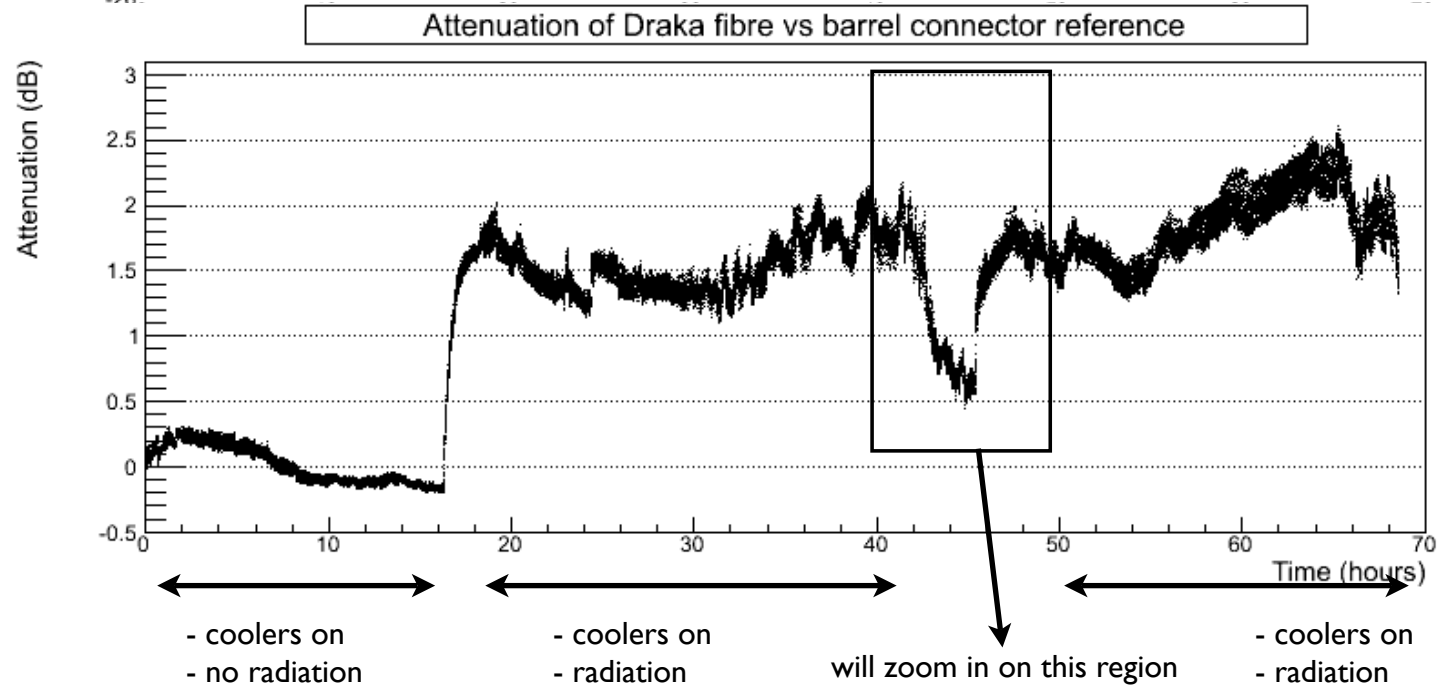
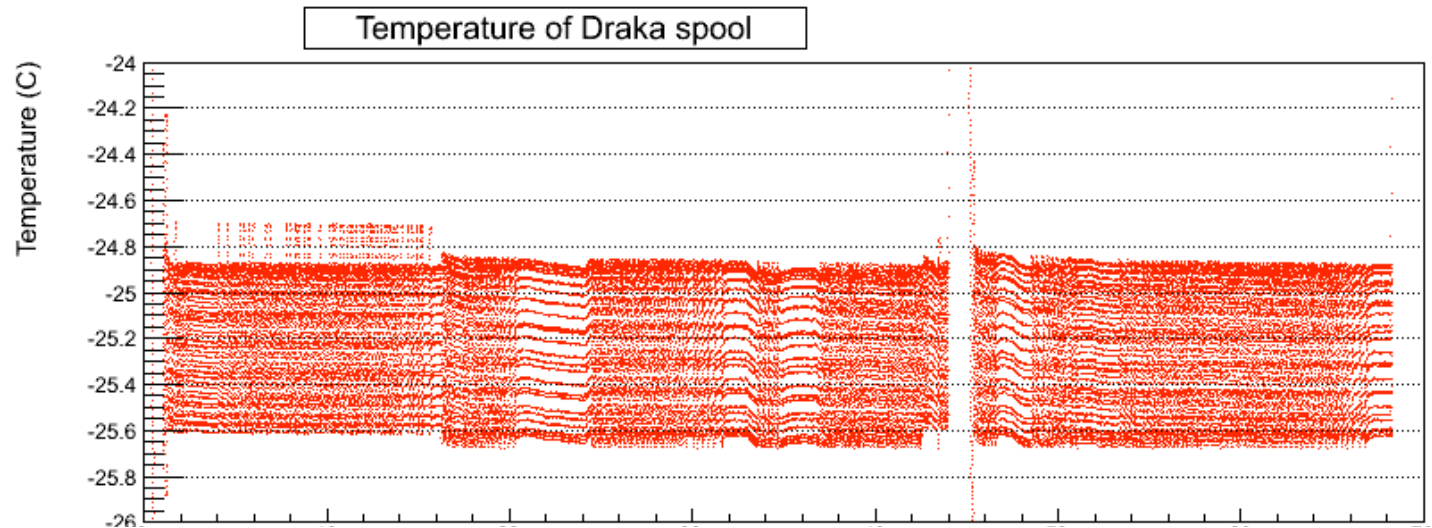
Status of vessel



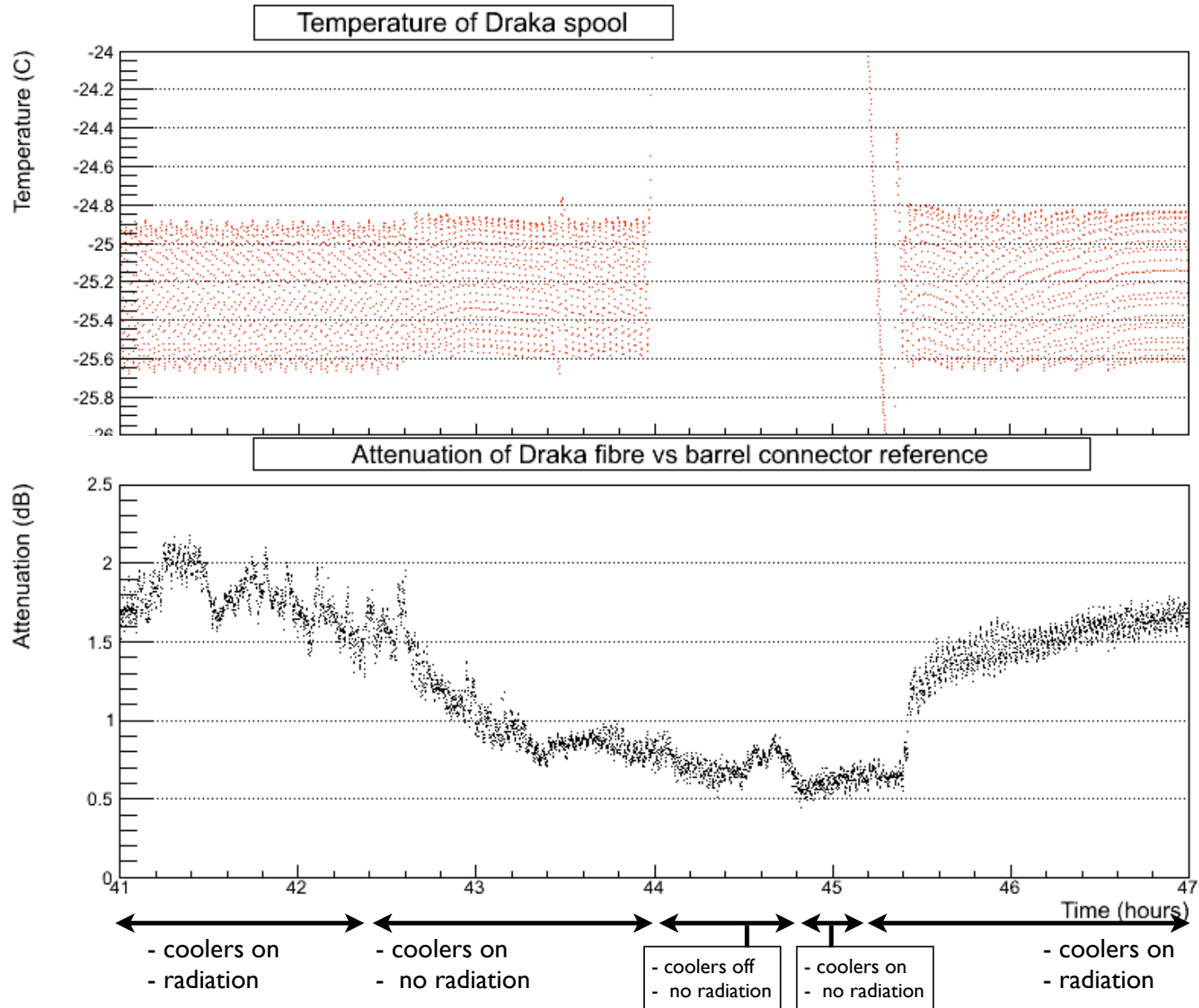
Status of vessel: hours 41-47



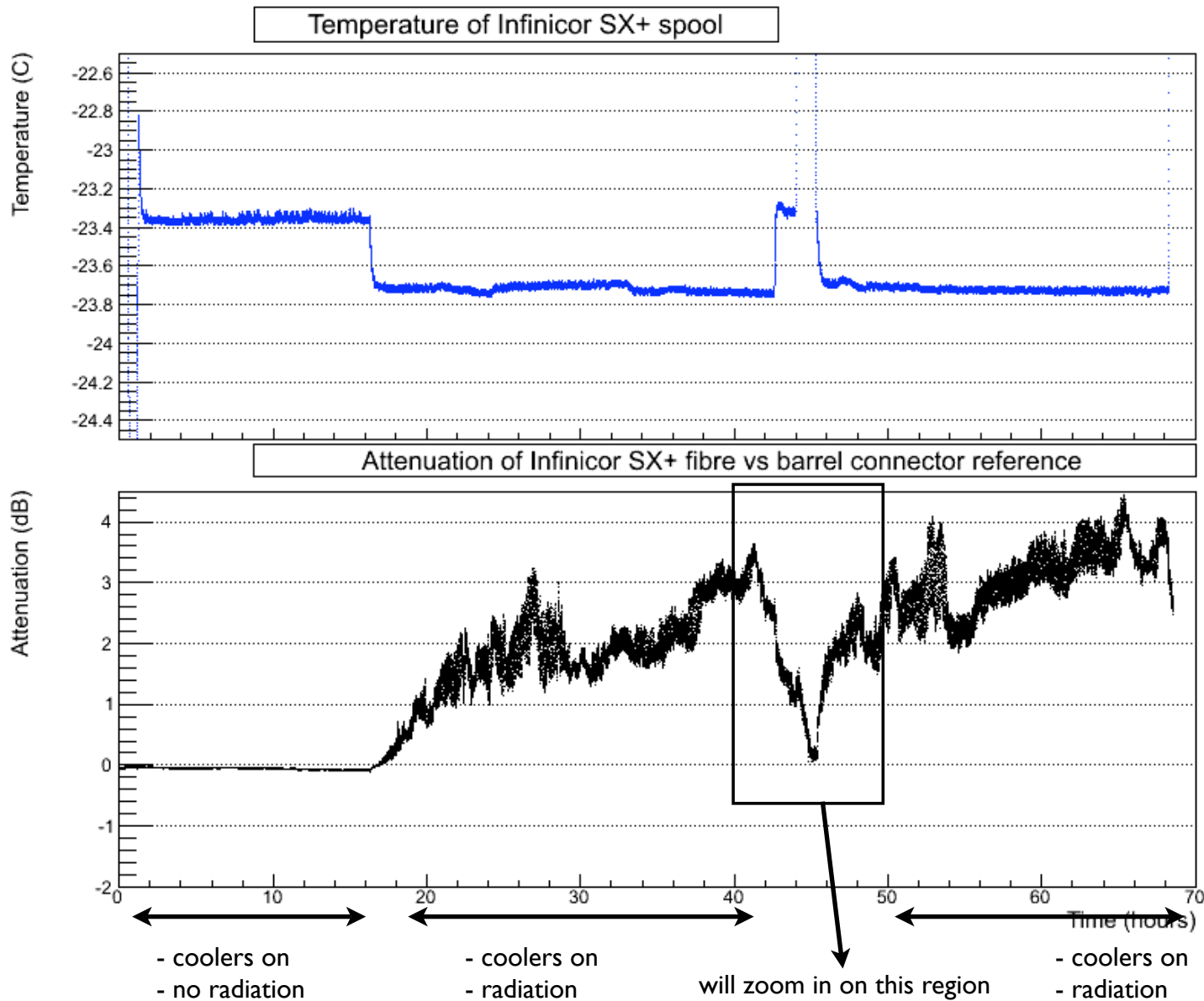
Draka fibre performance: entire run



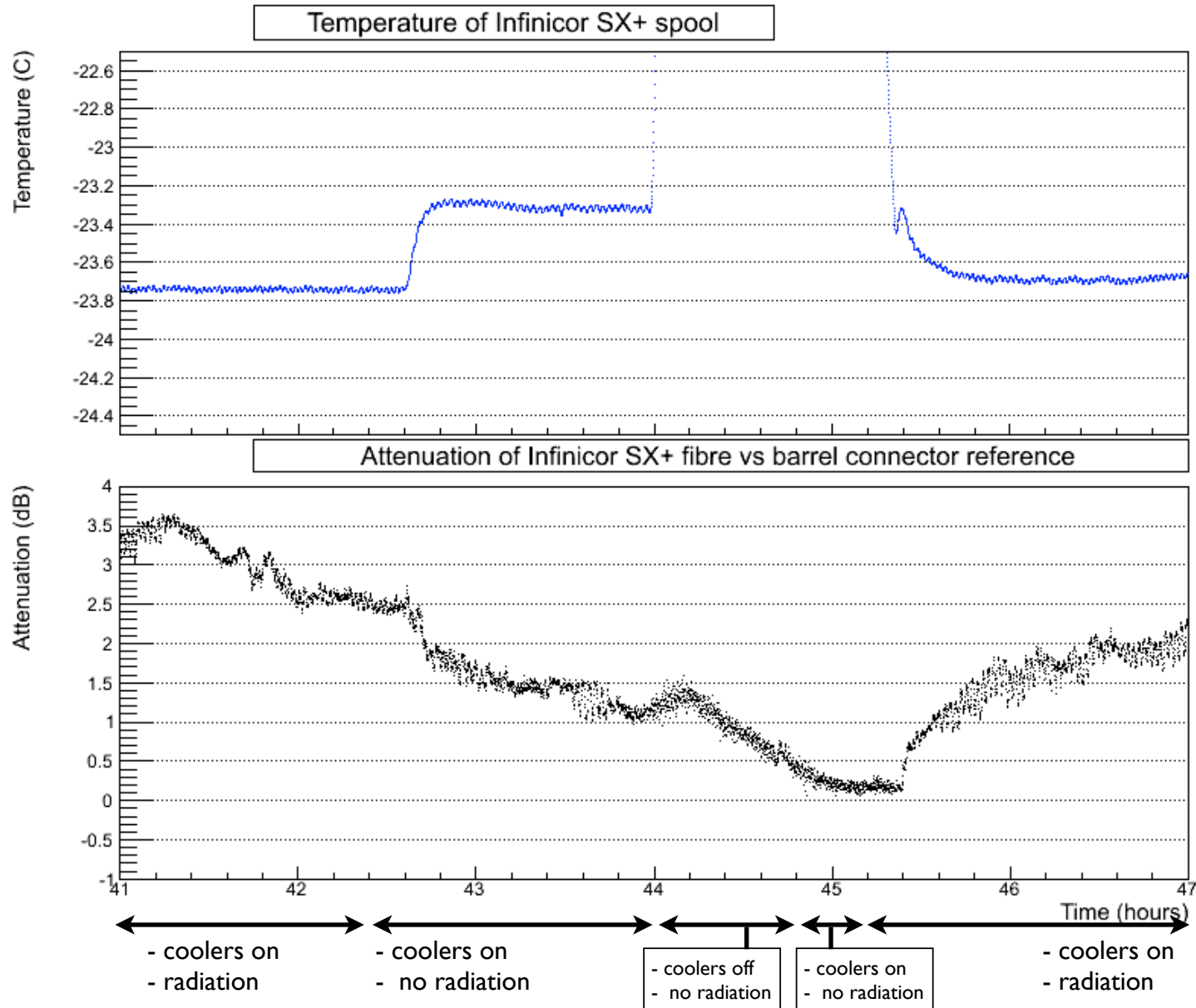
Draka fibre performance: hours 41-47



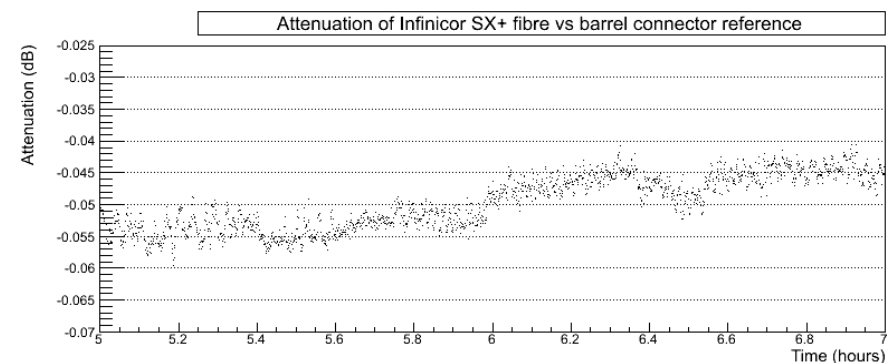
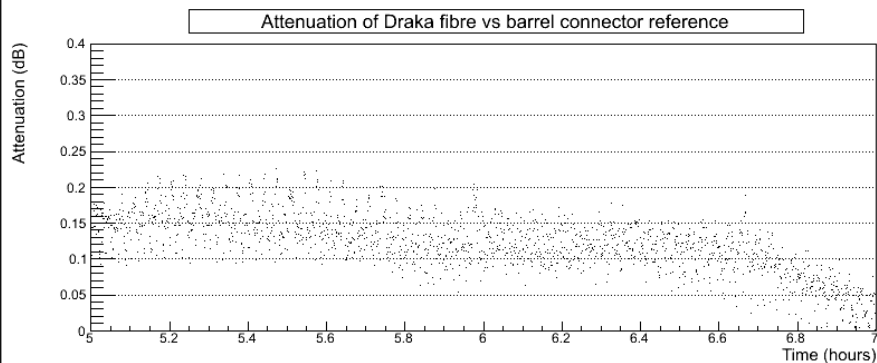
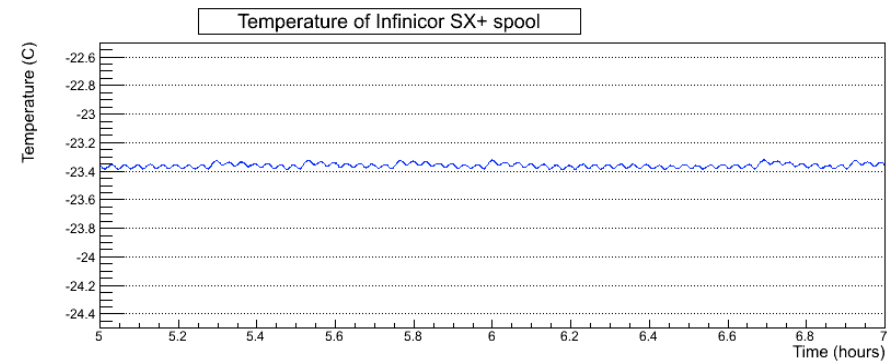
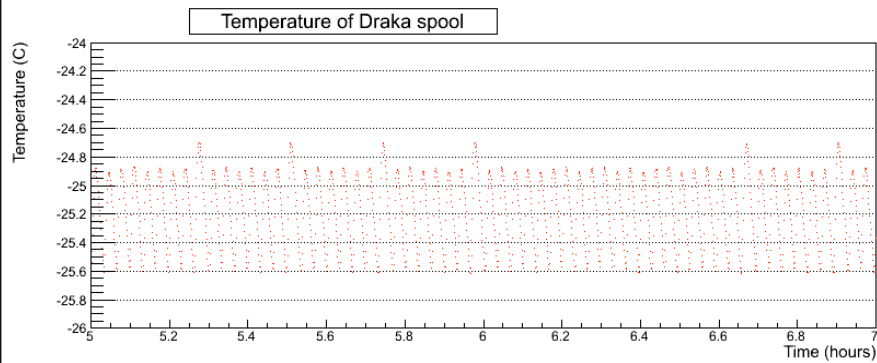
Infinicor fibre performance: entire run



Infinicor fibre performance: hours 41-47



Oscillation of temperature and attenuation on very short time scale: before radiation (hours 5-7)



Oscillation of temperature and attenuation on very short time scale: during radiation (hours 25-26)

