
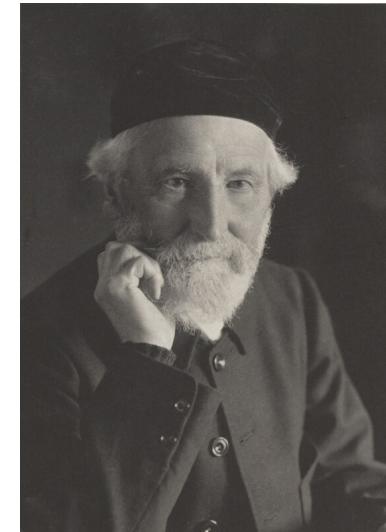
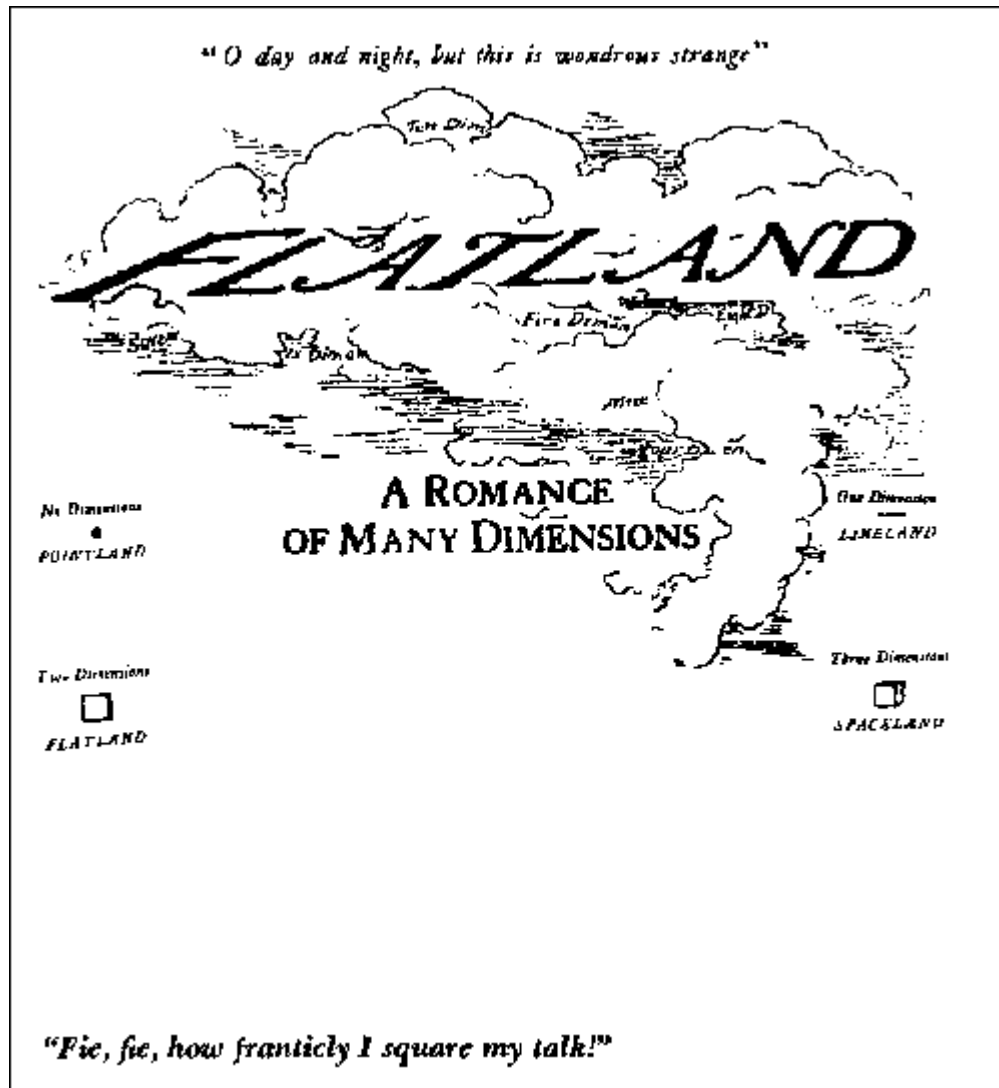


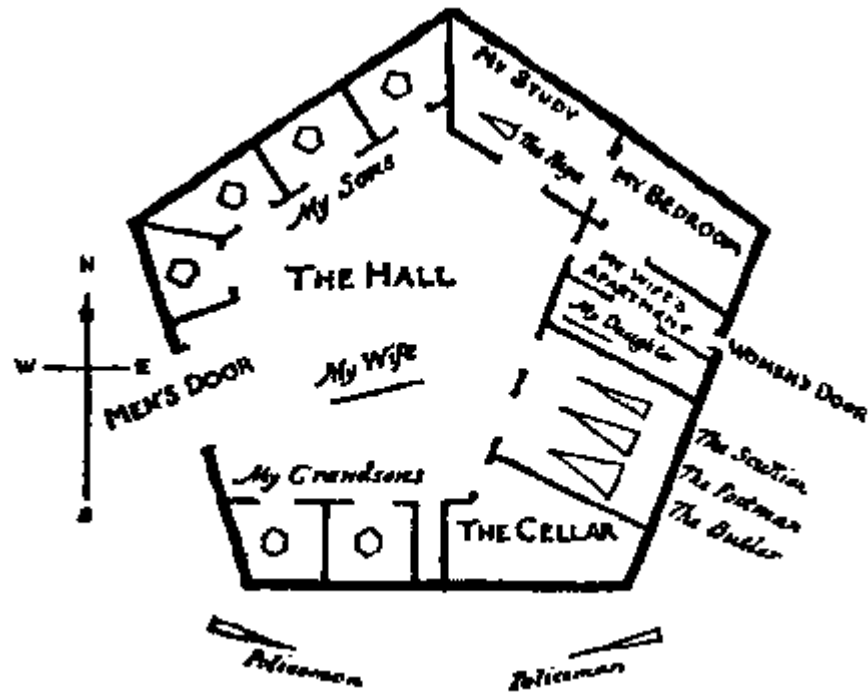
B2
Symmetry and Relativity
Lecture 2





Edwin A Abbott

1884



The background of the entire image is a dark, starry space scene. In the center, a large purple planet with a prominent ring system is visible. To its right is a bright red planet. On the left side, several colorful, flat, geometric shapes with faces are floating. From left to right, there is a small orange hexagon, a large blue square, a teal square, a pink square, and two yellow triangles. The bottom half of the image features a dark, geometric pattern of interconnected lines forming various polygons. The title 'FLATLAND' is written in large, white, sans-serif capital letters across the middle of this pattern. Below the title, the subtitle 'A Journey of Many Dimensions' is written in smaller white capital letters, and 'CLASSROOM EDITION' is written in yellow capital letters.

FLATLAND

A Journey of Many Dimensions

CLASSROOM EDITION

